



transmatic

Heat Seal Machines



TMH 38/50

TMH 38/50

	TMH 38	TMH 50
I Dimensione piastra	38x38 cm	50x40 cm
Tensione alimentazione	230 V monofase	230 V monofase
Potenza max.	KW 1,7	KW 2,2
Consumo	KW/h 0,8	KW/h 1,0
Temperatura	50°-305° C	50°-305° C
Tempo regolabile	0-999 sec.	0-999 sec.
Pressione	0-600 gr/cm ²	0-600 gr/cm ²
Peso netto	Kg 42 / Kg 48	Kg 48,5 / Kg 54,5

Pressa a caldo a funzionamento manuale.
Piastra termica superiore basculante per ottenere una pressione costante tra le due piastre. Regolazione elettronica del tempo e temperatura. La piastra inferiore è intercambiabile.
Possibilità di accessorio per berretti in opzione.

	TMH 38	TMH 50
D Plattengroesse	38x38 cm	50x40 cm
Spannung	230 V mon.	230 V mon.
Verbrauch	KW 1,7	KW 2,2
Verbrauch/h	KW/h 0,8	KW/h 1,0
Temperatur	50°-305° C	50°-305° C
Zeiteinstellung	0-999 sec.	0-999 sec.
Anpressdruck	0-600 gr/cm ²	0-600 gr/cm ²
Gewicht netto	Kg 42 / Kg 48	Kg 48,5 / Kg 54,5

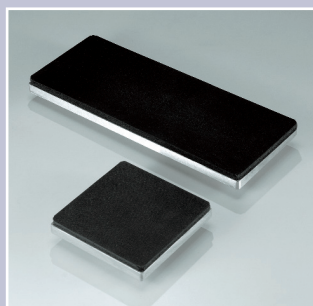
Manuelle Thermopresse mit neuem Hebelsystem.
Freihängendes Oberplatte für eine immer homogene Druckleistung. Einfache Druckregulierung auf dem Haupthebel.
Geeignet zur Applikation jeder Art Etiketten.
Zubehör für Kappendruck.

	TMH 38	TMH 50
UK Dimension of the plate	38x38 cm	50x40 cm
Current	230 V mon.	230 V mon.
Power consumption	KW 1,7	KW 2,2
Power consumption/h	KW/h 0,8	KW/h 1,0
Temperature	50°-305° C	50°-305° C
Time regulable	0-999 sec.	0-999 sec.
Pressure	0-600 gr/cm ²	0-600 gr/cm ²
Net weight	Kg 42 / Kg 48	Kg 48,5 / Kg 54,5

Manual heat press the top plate is not fixed in a rigid manner to ensure an homogenous pressure between the upper plate and the bottom plate. Electronic time and temperature regulation. Exchangeable under plate with rapid screw fitting. Suitable for any type of application.
Possibility to have the cap accessory as extra option.

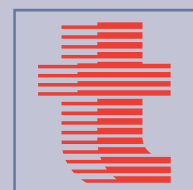
	TMH 38	TMH 50
F Dimension de la plaque	38x38 cm	50x40 cm
Voltage	230 V mon.	230 V mon.
Consommation totale	KW 1,7	KW 2,2
Consommation totale/h	KW/h 0,8	KW/h 1,0
Température	50°-305° C	50°-305° C
Régulation du temps	0-999 sec.	0-999 sec.
Pression	0-600 gr/cm ²	0-600 gr/cm ²
Poids net	Kg 42 / Kg 48	Kg 48,5 / Kg 54,5

Presse à chaud manuelle. Plaque supérieure basculante qui permet d'avoir une pression constante.
Régulation électronique du temps et de la température.
La plaque inférieure est interchangeable.
Adapte pour l'application de tous types d'étiquettes à chaud.
Possibilité d'avoir l'accessoire pour les casquettes en option.



I dati e le caratteristiche tecniche sono puramente indicativi e soggetti a variazioni senza obbligo di preavviso.

All data and technical features are purely indicative and subject to changes without prior notice.



transmatic s.r.l.

Via Enzo Ferrari, 9/11/13
20824 Lazzate (MB) - ITALY
Tel. +39 02 96329816 - +39 02 96329024
Fax: +39 02 96728422
e-mail: info@transmaticsrll.com
web: www.transmaticsrll.com